

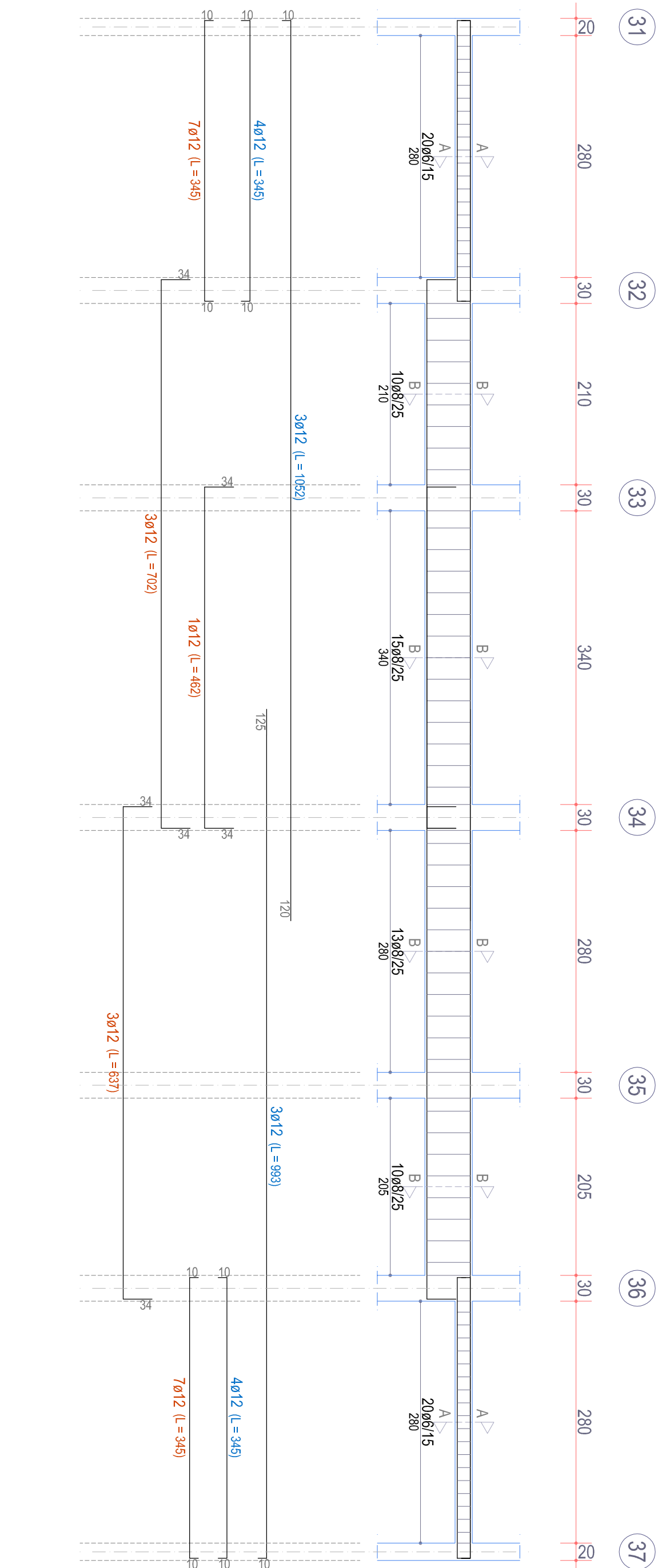
POR PUGLIA FSR 2014-2020
ASSE IV, AZIONE 4.1 e ASSE IX, AZIONE 9.13

Comune di LUCERA
Intervento di verifica statica, efficientamento energetico e eliminazione delle
barriere architettoniche dell'edificio A.R.C.A. Capitanata n. 450,
sito in Via Izzono
Finanziamento: € 5.500.000

Il progettista Arch. Nicolaia Celisio Via S. Maria Maddalena n. 194 71121 Roggiano - Umbelto d'Agostino (Foggia)	Il responsabile tecnico del procedimento e Verificatore del Progetto (Resp. Ufficio Calcoli) A.R.C.A. Capitanata Ing. Francesco Sisti Ing. Vincenzo Di Lorenzo
---	--

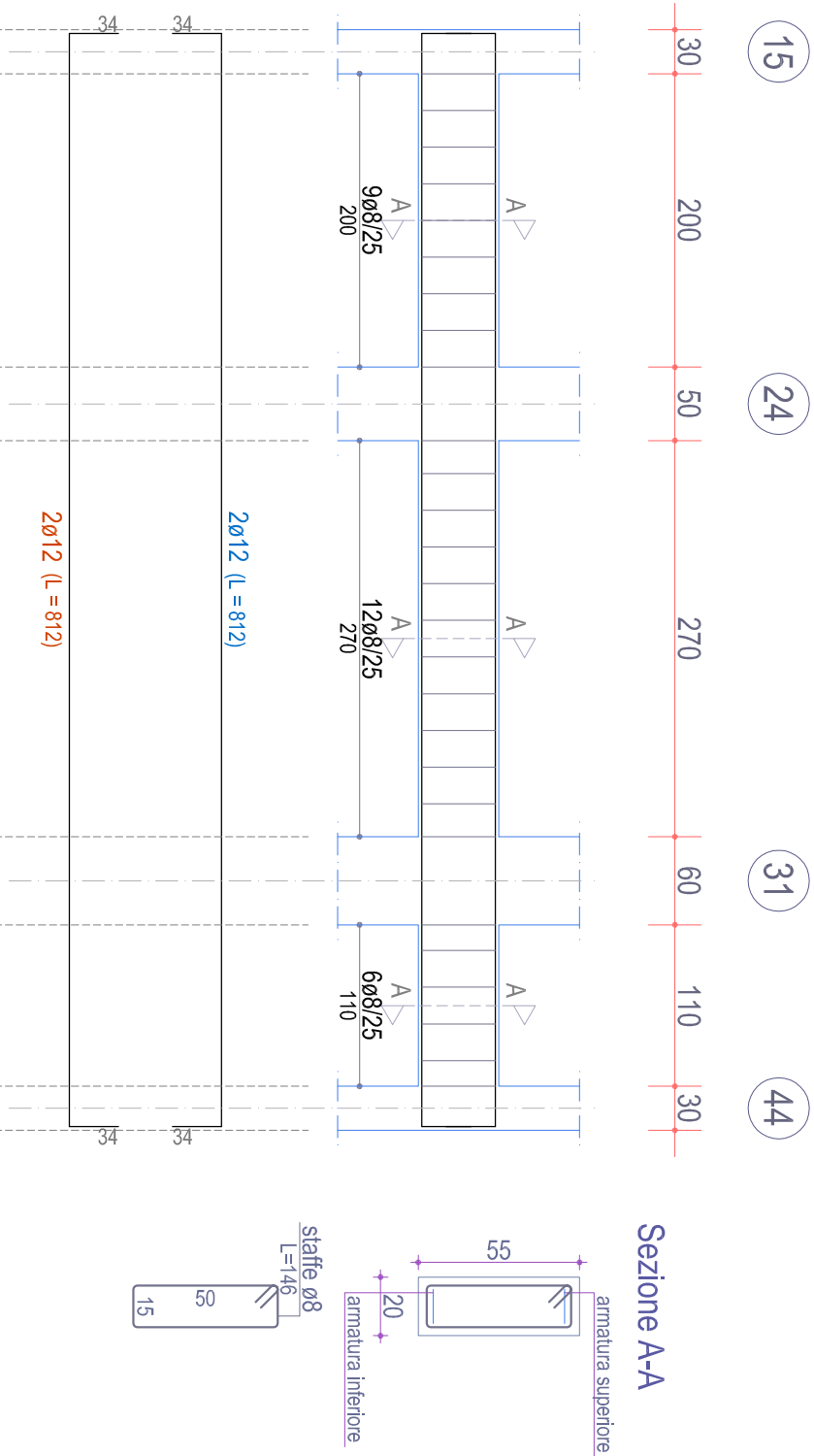
TAVOLA ES20 BLOCCO "AA" STATO ATTUALE TRAVI PIANO PRIMO	SCALA 1:50 DATA
ACQUADORNAMENTI L. LIPREDA	L. GENTILE DI LANCINI
40	

TRAVE 31-32-33-34-35-36-37 (esistente)



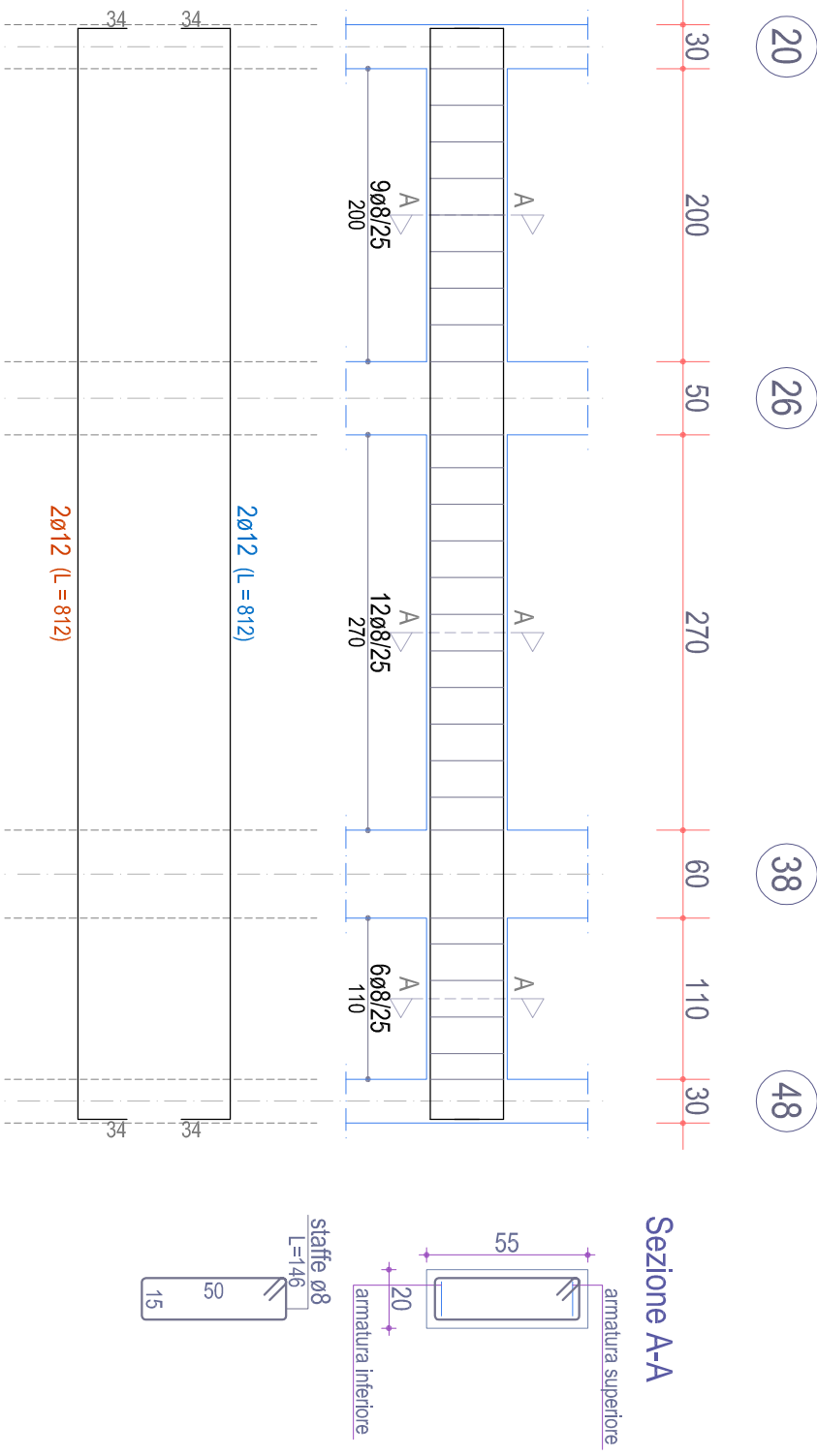
Piano Primo

TRAVE 15-24-31-44 (esistente)



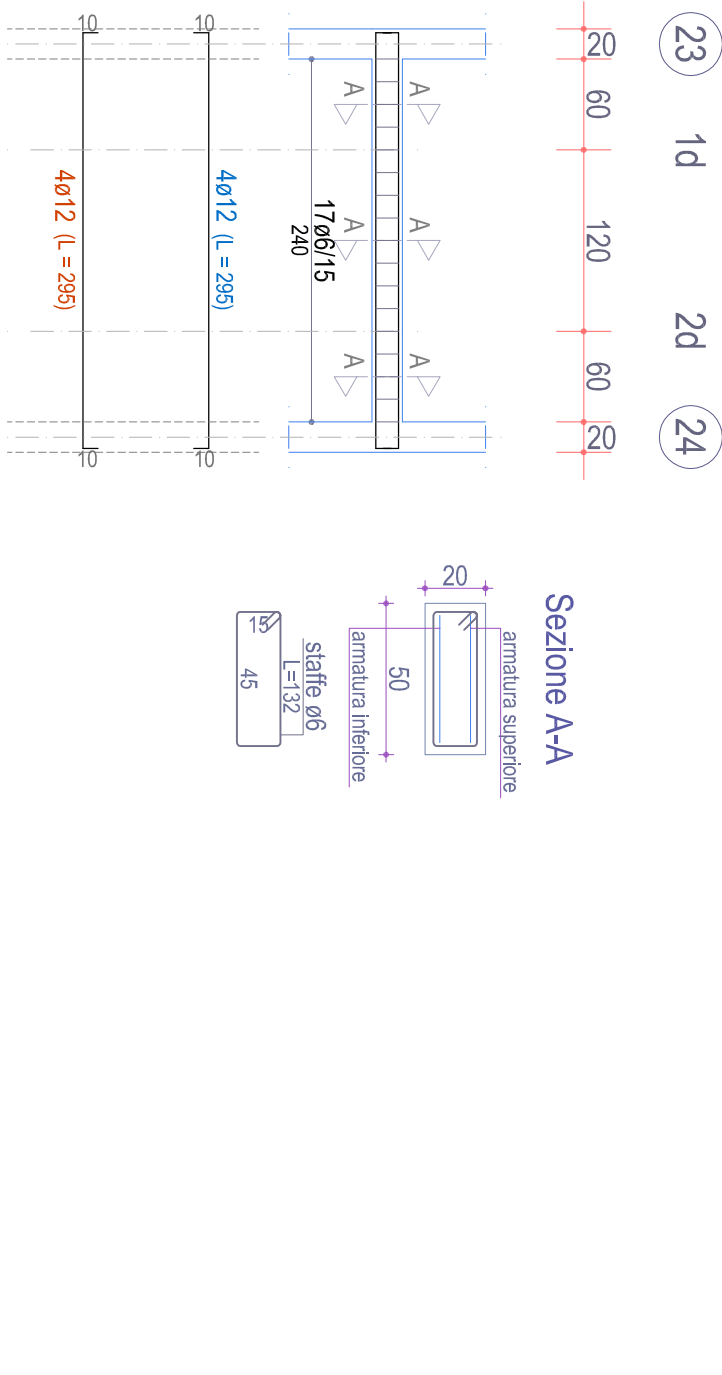
Piano Primo

TRAVE 20-26-38-48 (esistente)



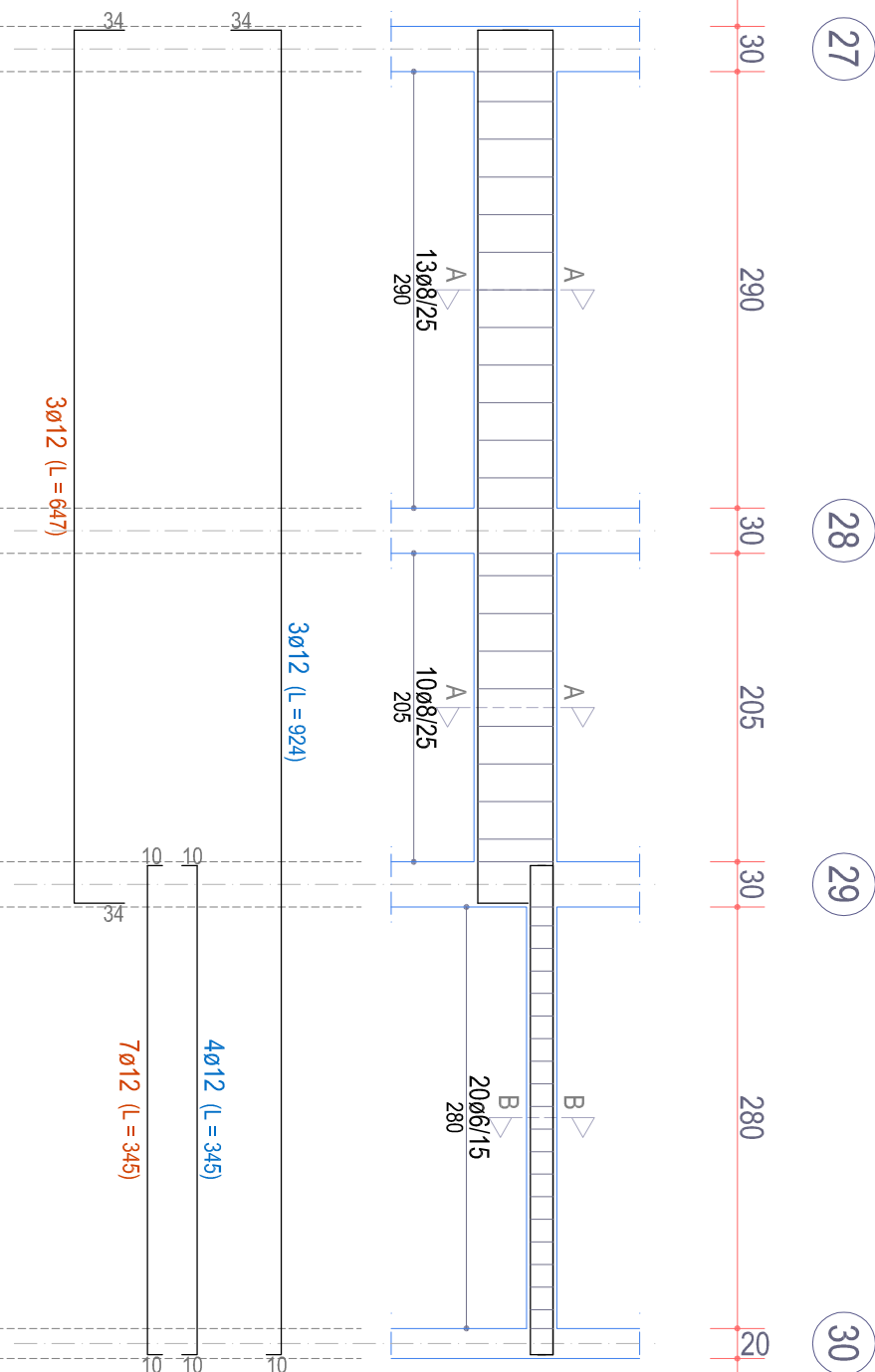
Piano Primo

TRAVE 23-1d-24-24 (esistente)



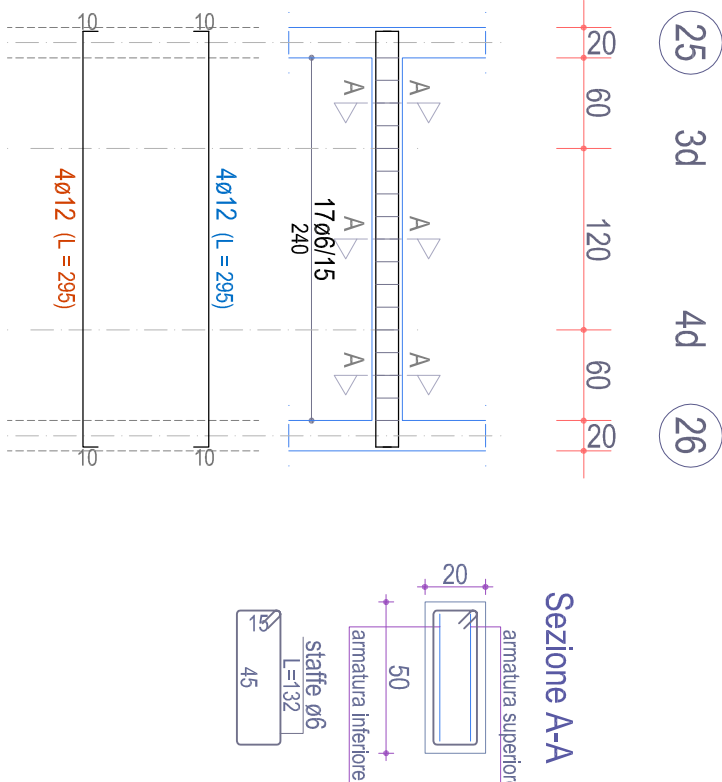
Piano Primo

TRAVE 27-28-29-30 (esistente)



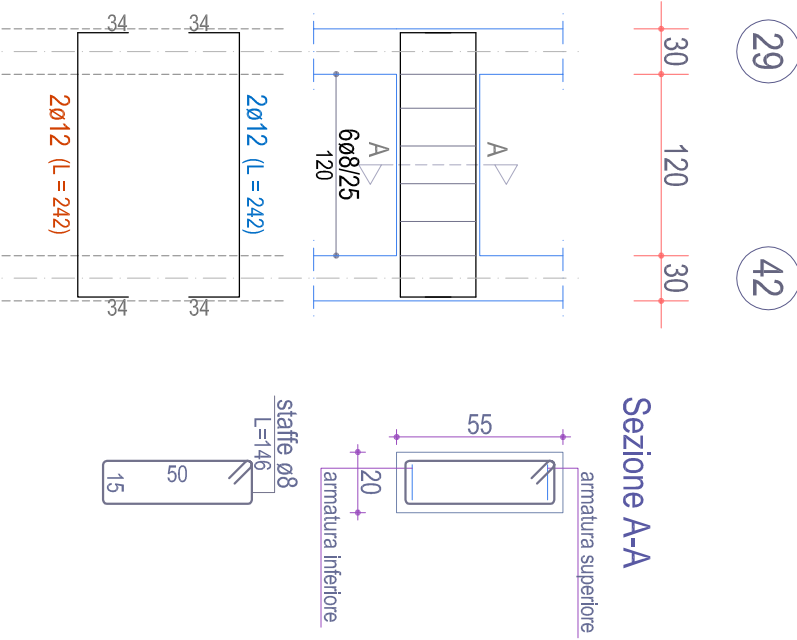
Piano Primo

TRAVE 25-3d-4d-26 (esistente)



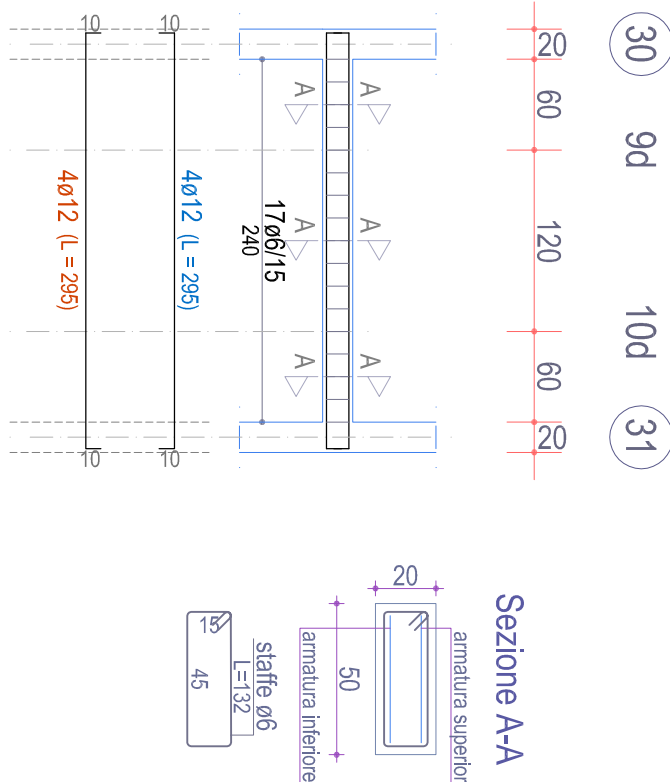
Piano Primo

TRAVE 29-42 (esistente)



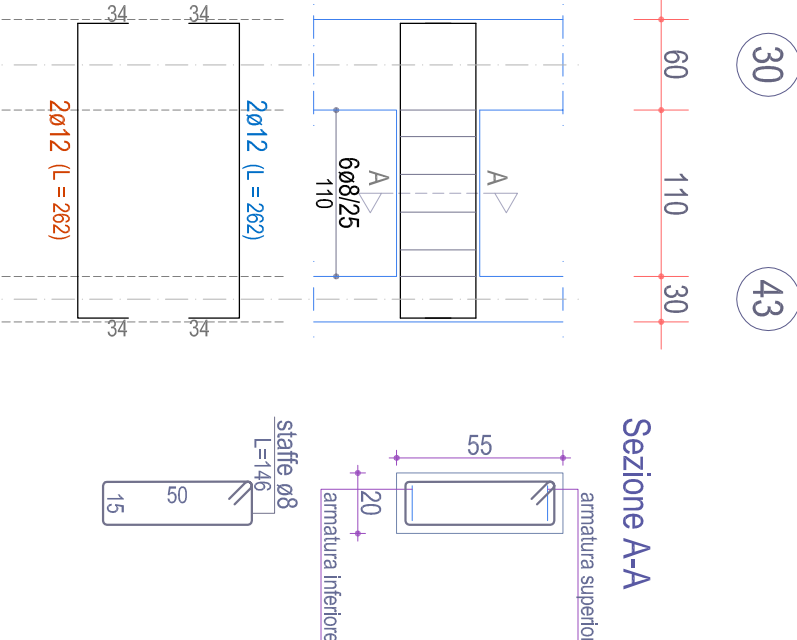
Piano Primo

TRAVE 30-9d-10d-31 (esistente)



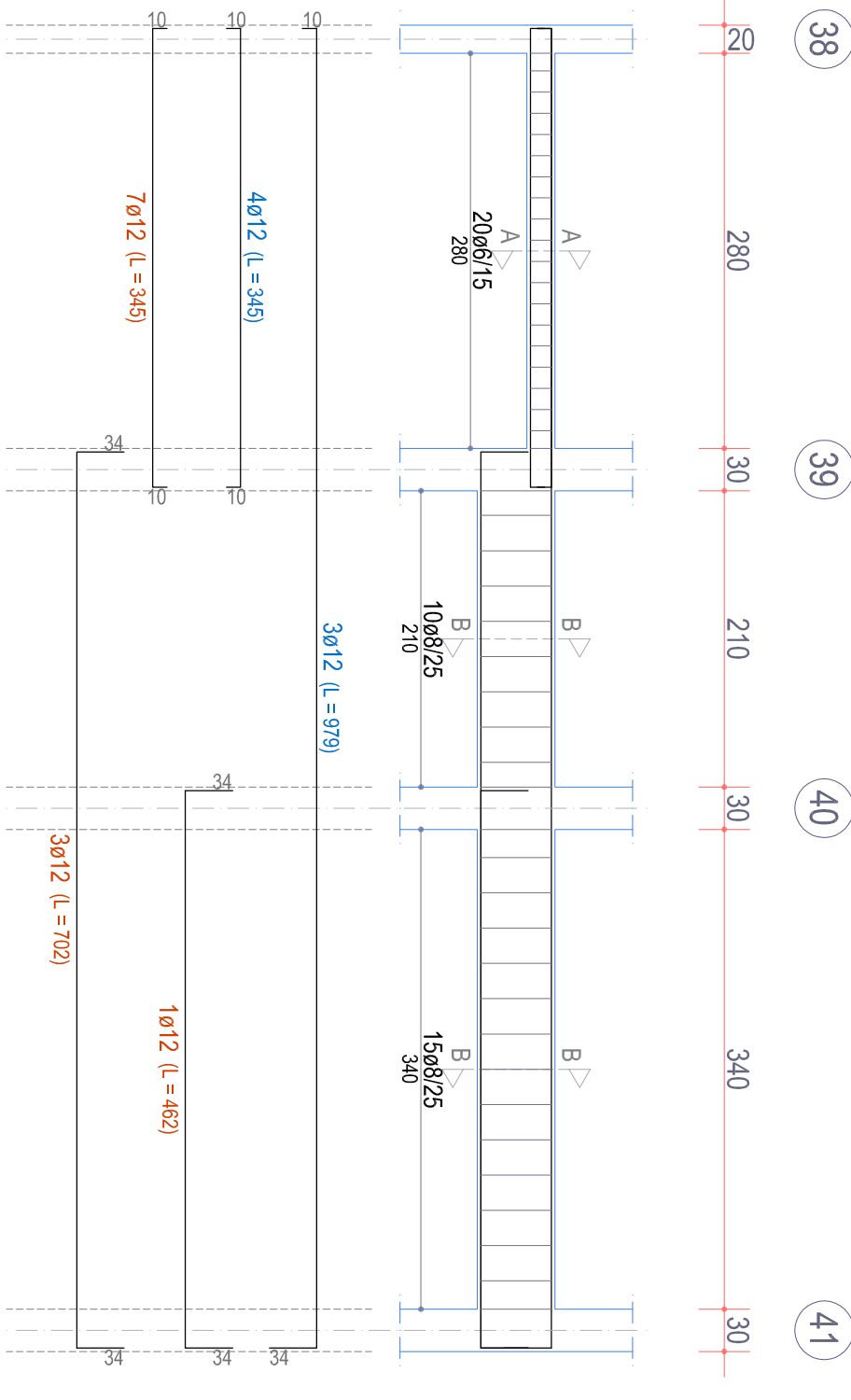
Piano Primo

TRAVE 30-43 (esistente)



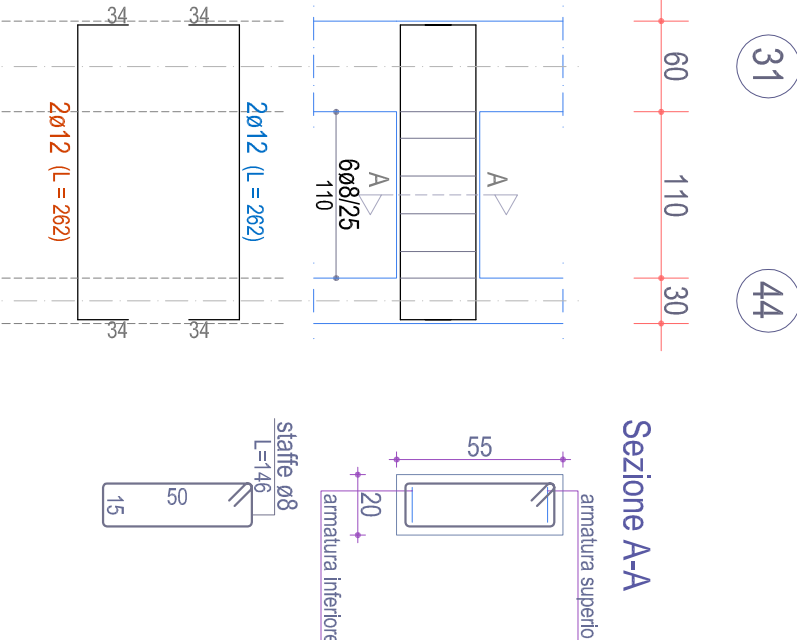
Piano Primo

TRAVE 36-39-40-41 (esistente)



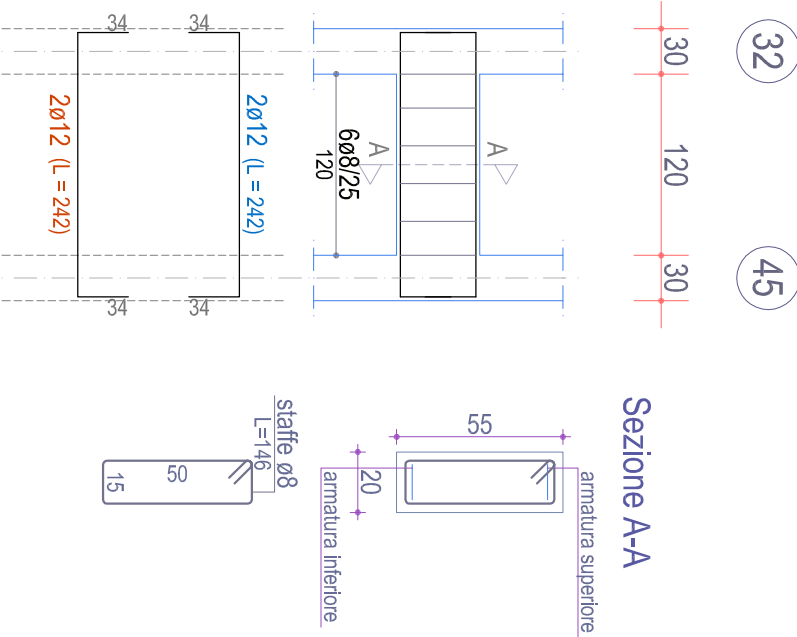
Piano Primo

TRAVE 31-44 (esistente)



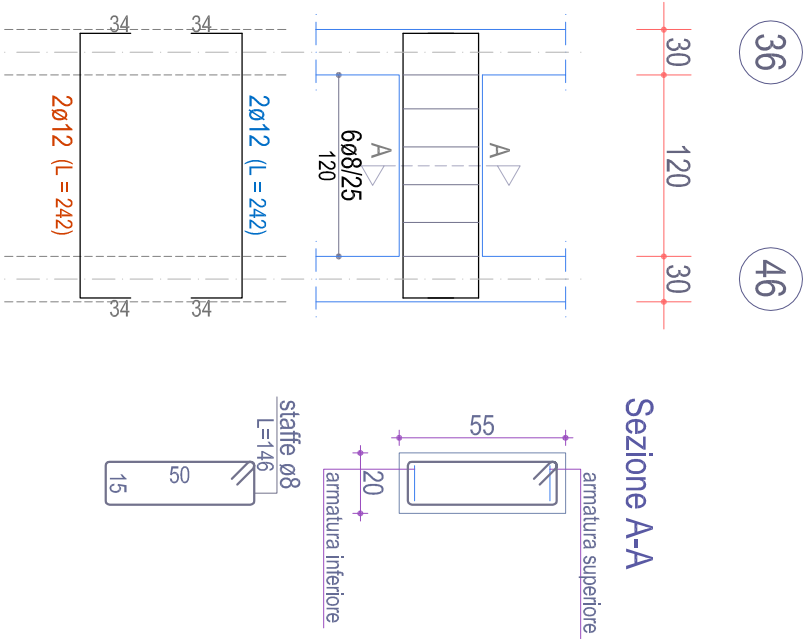
Piano Primo

TRAVE 32-45 (esistente)



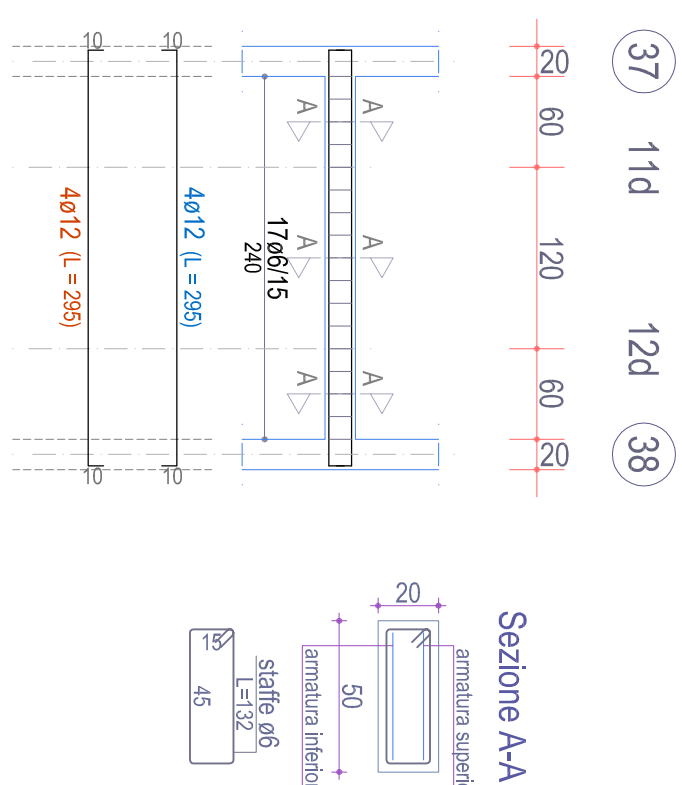
Piano Primo

TRAVE 36-46 (esistente)



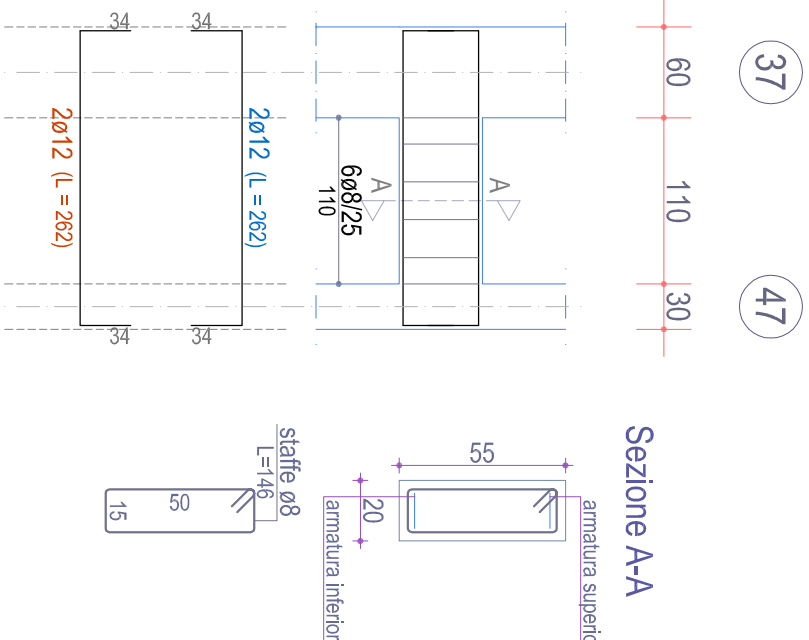
Piano Primo

TRAVE 37-11d-12d-38 (esistente)



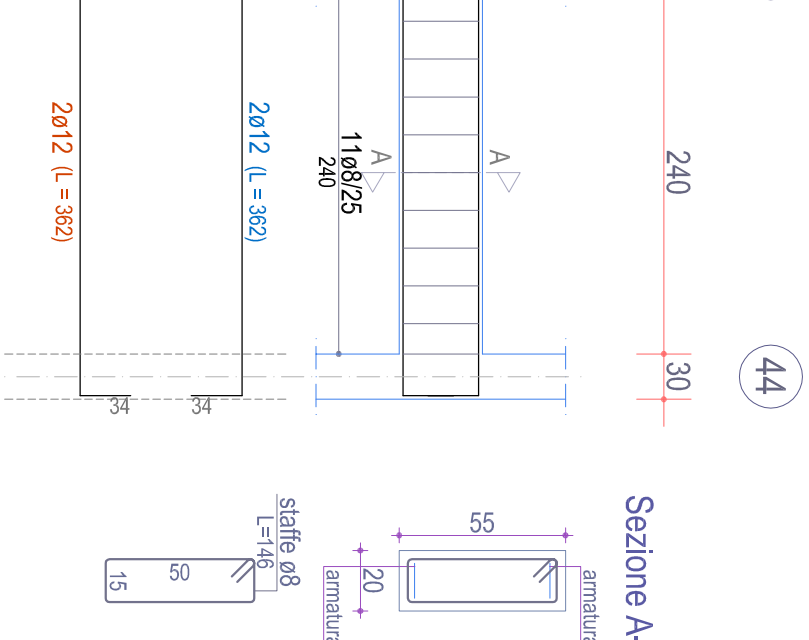
Piano Primo

TRAVE 37-47 (esistente)



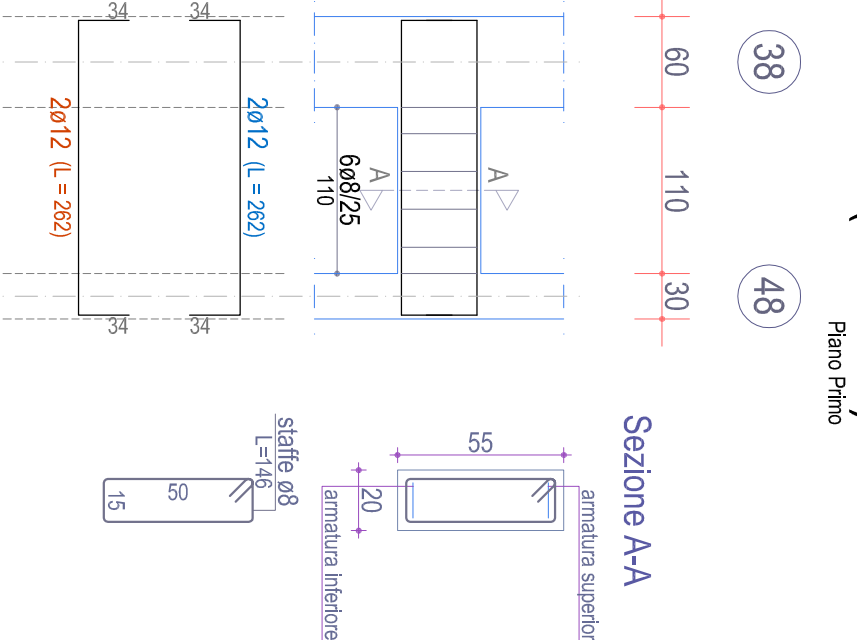
Piano Primo

TRAVE 43-44 (esistente)



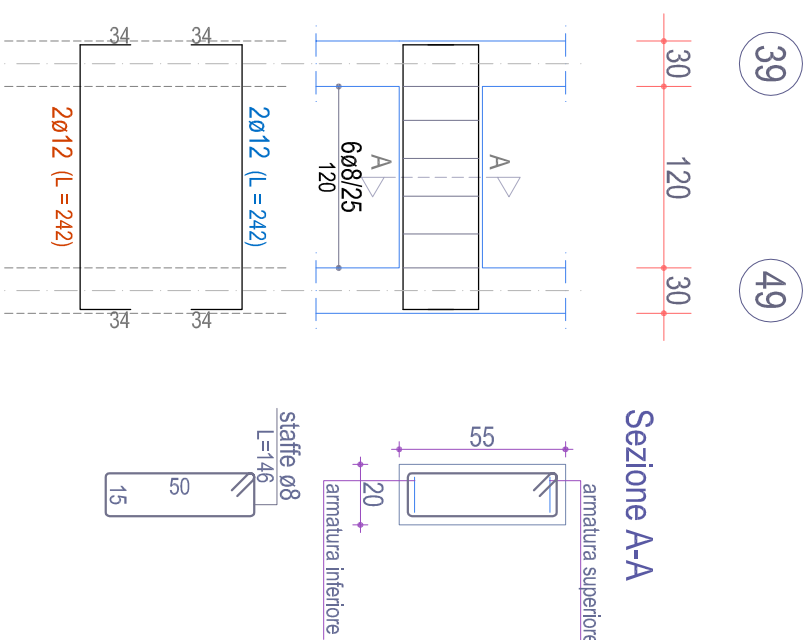
Piano Primo

TRAVE 38-48 (esistente)



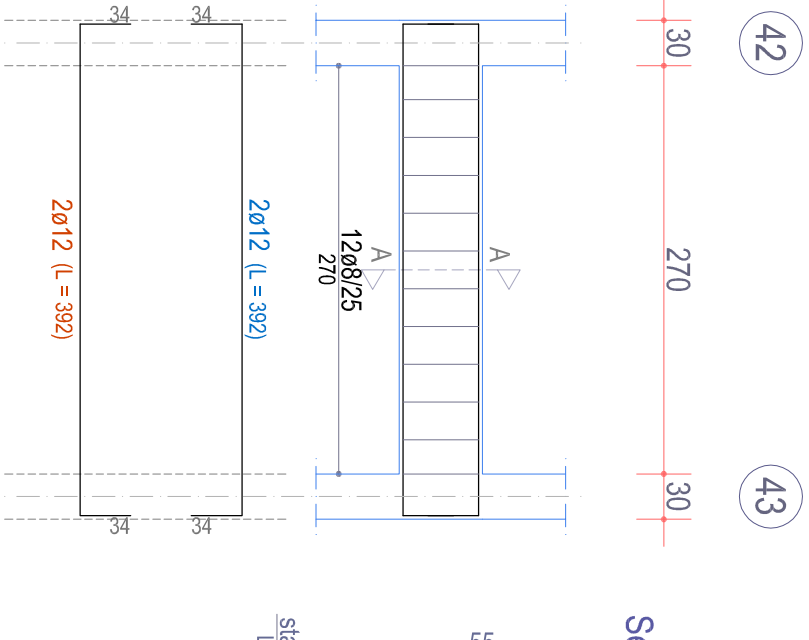
Piano Primo

TRAVE 39-49 (esistente)



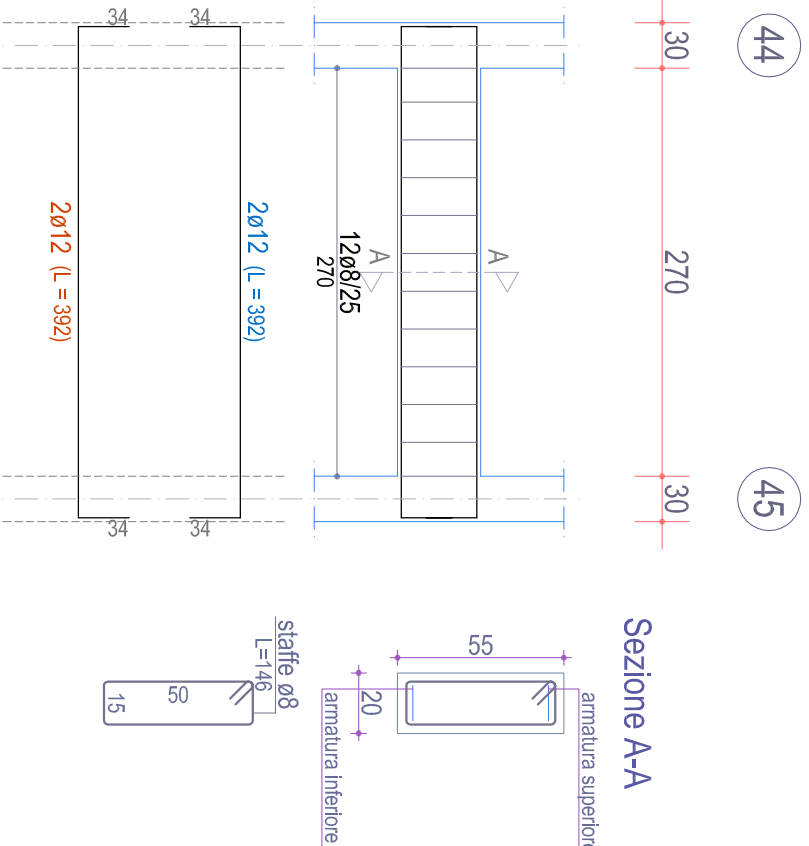
Piano Primo

TRAVE 42-43 (esistente)



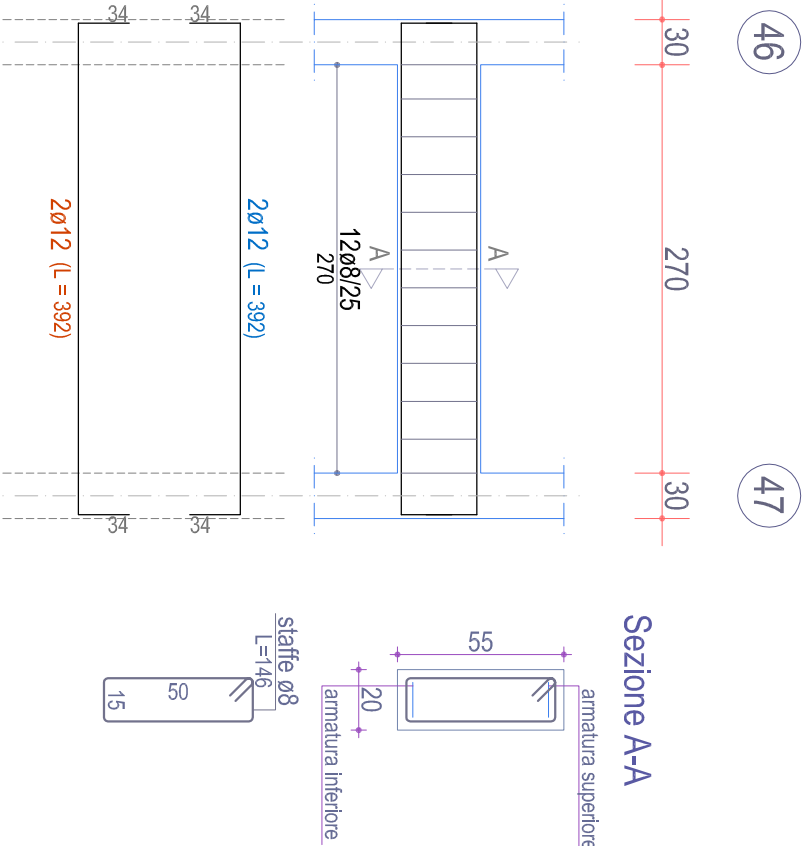
Piano Primo

TRAVE 44-45 (esistente)



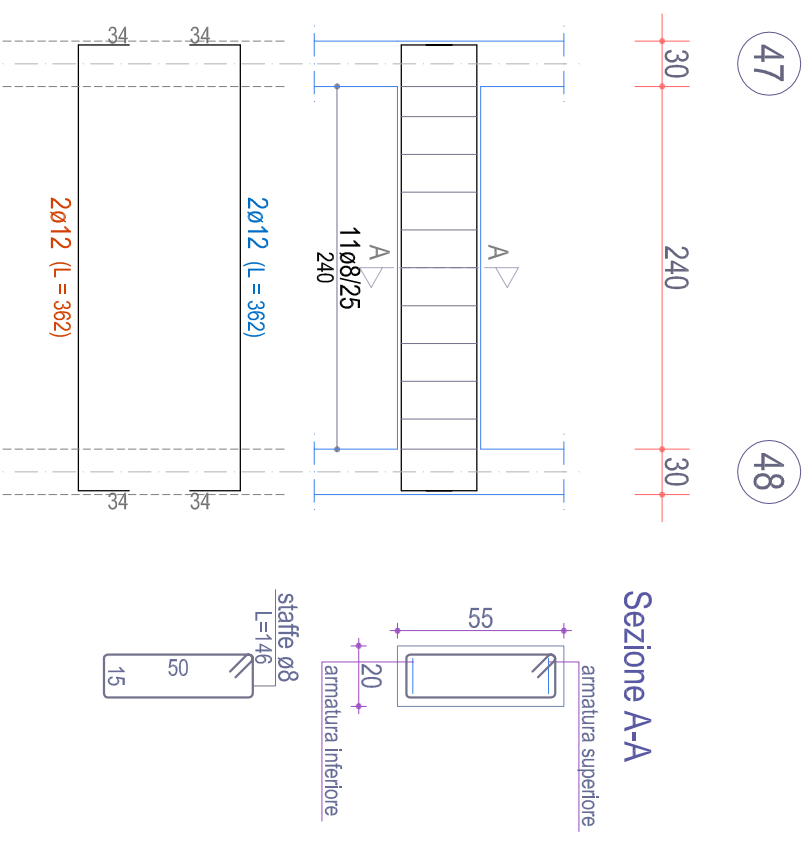
Piano Primo

TRAVE 46-47 (esistente)



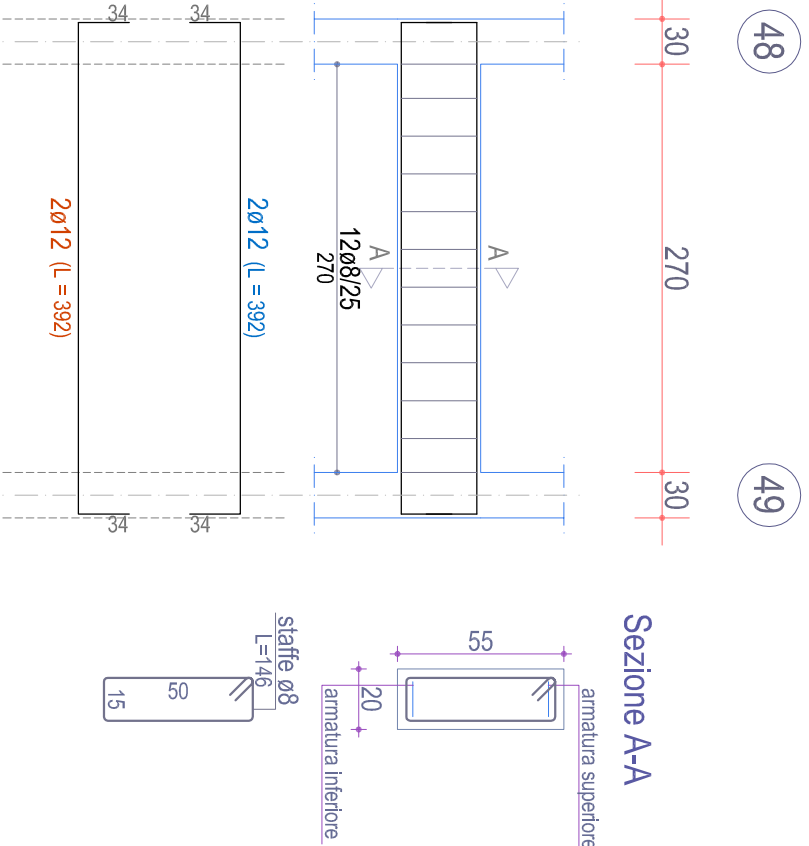
Piano Primo

TRAVE 47-48 (esistente)



Piano Primo

TRAVE 48-49 (esistente)



Piano Primo